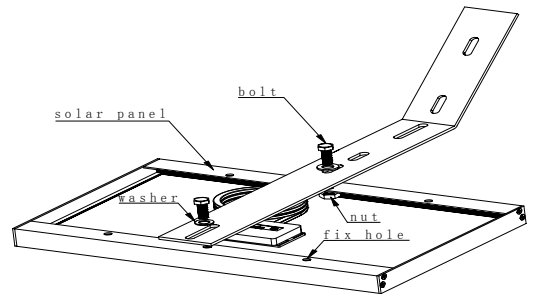


SOLARTECH POWER Accessory

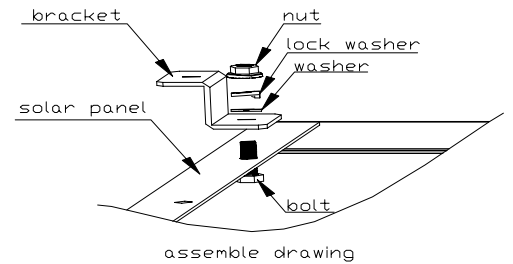
L-Style Mounting Bracket

Be used in the building and outdoor.
Maintenance Free & Easy Installation.
Suit Solartech Power 5W to 20w modules.
Anodized Aluminum



Z-Style Mounting Bracket

Commonly used for mounting solar modules on boats and RV's.
Maintenance Free & Easy Installation.
Set includes 4 Z Brackets



Caution label

The label introduces solutions for solar panel installation.
They are recommended for use in identification of DC disconnects and inverters.
Aluminum, Galvanized



Flashing

The flashing has a no-caulk collar
Specifically designed for solar panels on both tile and metal roofs.



Cable

We provide the solar solutions for you need wiring to connect the components of your renewable energy system together. such as :
Y-style cable Female-2Male, Male-2Female, 30 Ft cable
Y-connectors Female-2Male, Male-2Female, MC3, MC4 Connector



Y-Style cable



30 Ft cable



Y-connectors



MC4 Connector